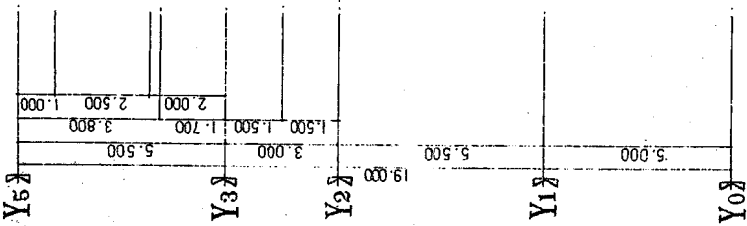
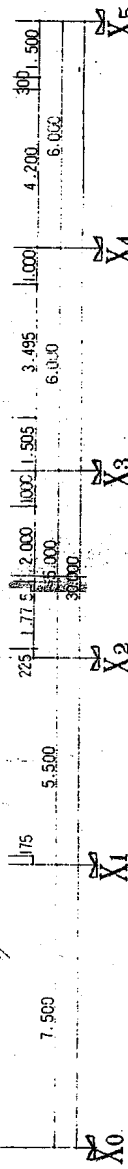
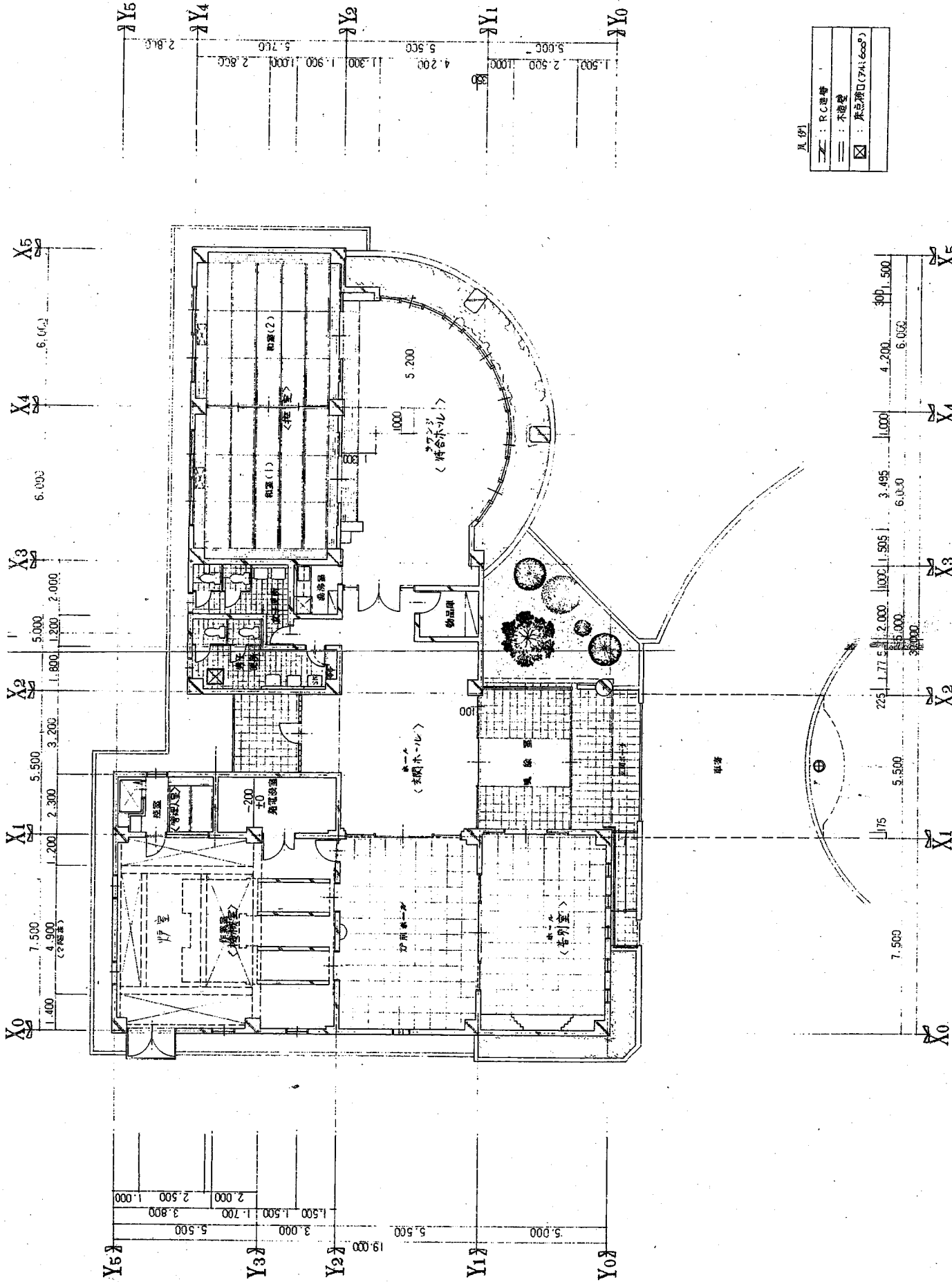
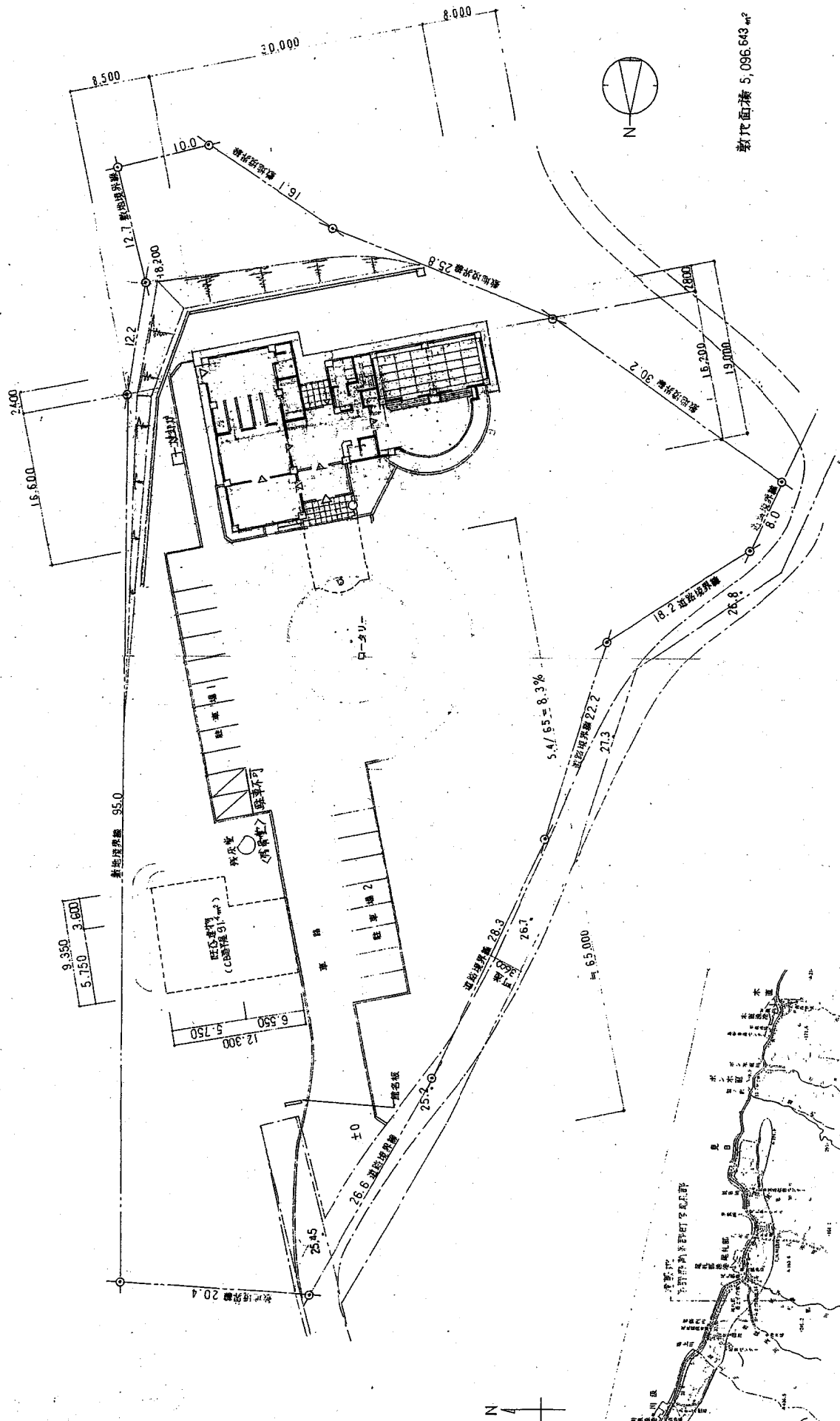


南 茅 部 斎 場
(概 要 図)

凡例

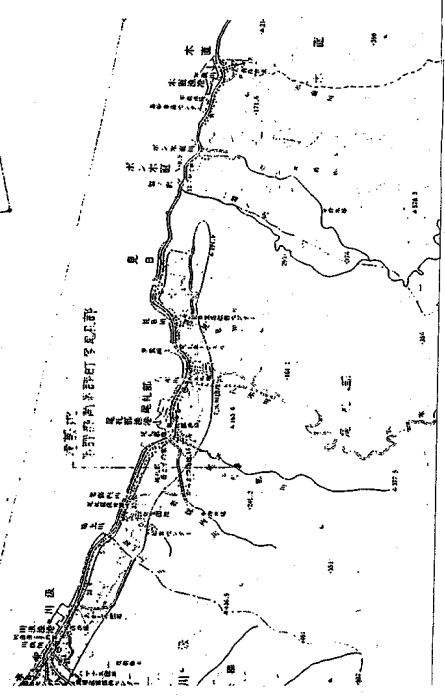
—	RC壁等
≡	不燃壁
☒	床点開口(741.6mm ²)





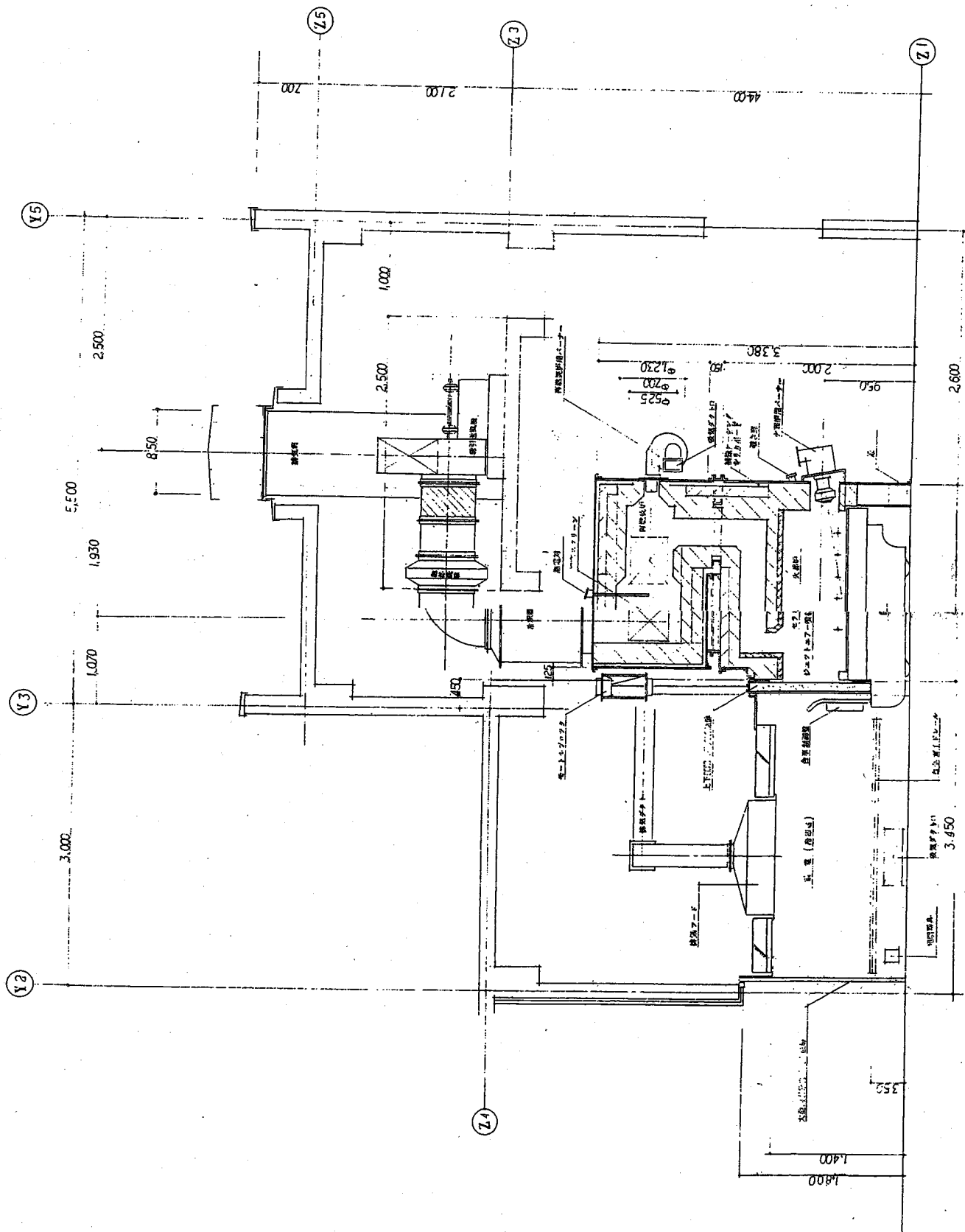
敷地面積 5,096.643 m²

配置図 1:800

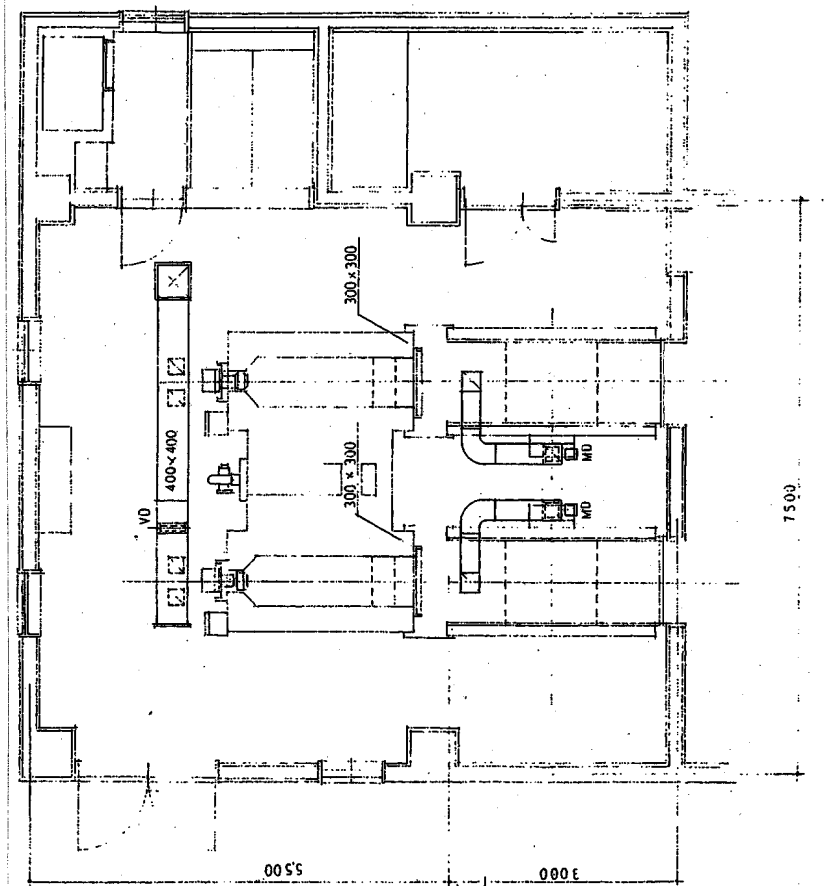


附近見取図 1:50,000

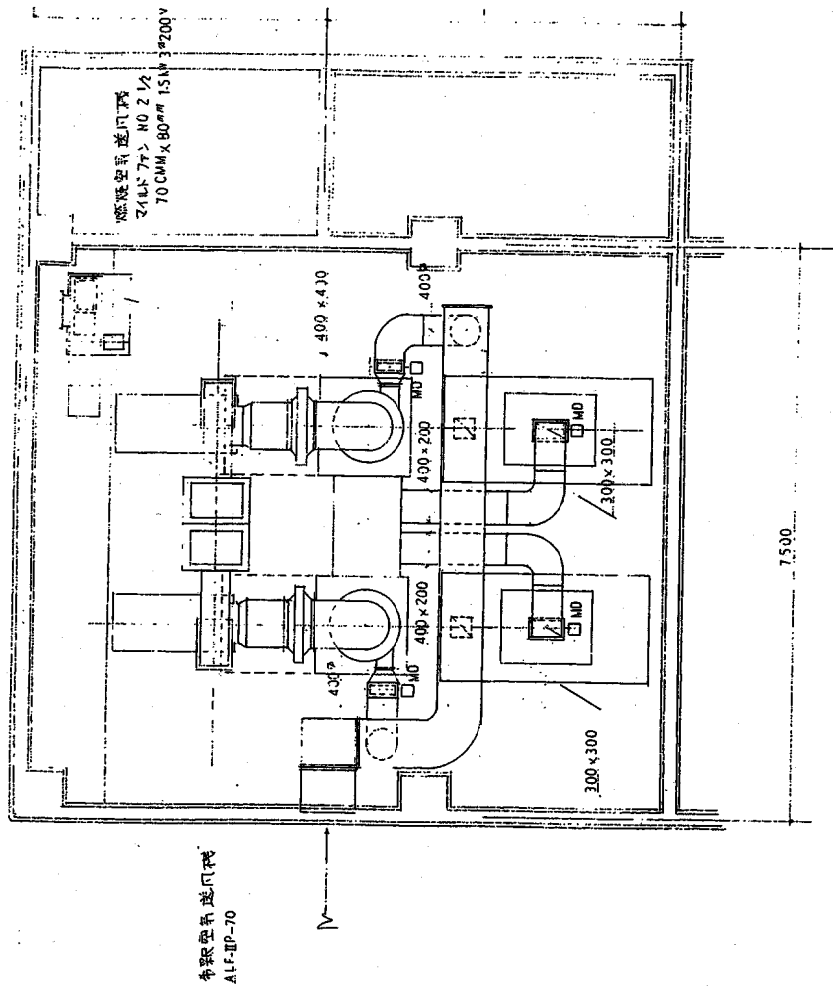
[南茅部斎場火葬炉概要図]



[南茅部火葬炉平面配置图]



1 階平面図 1:50



2 階平面図 1:50